



PURSuing WORLD-CLASS SILVER AND GOLD DISCOVERIES IN PERU

TSXV : TSLV OTCQB : TSLVF

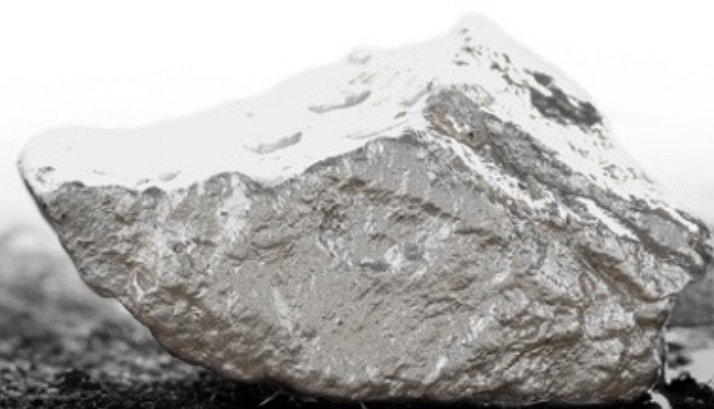
June 2025

Disclaimer

This document has been prepared by Tier One Silver (the “Company”) to introduce the Company’s mineral exploration projects. Because it is a high-level summary presentation, the information contained herein cannot contain all the information that should be reviewed before making an investment decision.

SUMMARY OF CAUTIONARY NOTES

- Forward looking statements are inherently uncertain
- Canadian mineral disclosure differs from U.S. mineral disclosure
- See full disclosure records for Tier One Silver at www.sedar.com
- Christian Rios (SVP, Exploration), P. Geo, is the Qualified Person who assumes responsibility for the technical contents of this presentation



Tier One Investment Highlights



STRONG FUNDAMENTALS

- ✓ **Quality Asset:** Flagship project, Curibaya, is on a world-class porphyry belt, directly surrounded by some of the largest discoveries in the world including: Cerro Verde (Freeport), Toquepala (southern Copper), Quellaveco (Anglo), Cuajone (Southern Copper)
- ✓ **Excellent High-Grade Results:**
 - Initial surface sampling programs at Curibaya returned phenomenal high-grade samples of silver, gold and copper over a 4 km x 5 km alteration system that reached **298,000 g/t Ag and 940 g/t Au**
 - The 2021 maiden drill program returned multiple significant intercepts, **including 1.5 m of 1,129 g/t silver, 1.04 g/t Au and 1 m of 1,431 g/t Ag, 0.39 g/t Au***
 - Uncovered the potential for a large Porphyry Copper system
- ✓ **Peru, Favorable Mining Jurisdiction:** Access to infrastructure: low elevation (1900m), close proximity to the coast, easy accessibility, drill permitted
- ✓ **Experienced Team:** Leadership with a track record of monetizing discovery success for shareholders: Keegan Resources and Cayden Resources
- ✓ **Low Valuation, Primed for Re-Rating:** Current entry point provides tremendous upside potential as we look to progress flagship project and enhance portfolio of projects.

* AgEq (Ag,Au) intervals at 75ppm (minimum 1m, max consecutive dilution 2m)

Experienced and Balanced Team

MANAGEMENT & DIRECTORS

MANAGEMENT



PETER DEMBICKI
President, CEO & Director



STACY ROWA, CPA, CA
Chief Financial Officer



CHRISTIAN RIOS, P. Geo.
Senior Vice President, Exploration

DIRECTORS



**IVAN
BEBEK**
Co-Founder, Chair



**JEFFREY
MASON,**
CPA, ICD.D



**ANTONIO
ARRIBAS,**
PhD (Geology)



PAUL SUN
CFA, P. Eng.



**CHRISTY
STRASHEK,**
CFA

Leadership with a Track Record of Monetizing Discovery Success



KEEGAN RESOURCES*

2008 – 2011

*Renamed to Galiano Gold
in lieu of a sale a producing mining company was formed

18x RETURN During Discovery



CAYDEN RESOURCES*

May 2013 – Sept 2014

Takeover
*Sold for \$205 Million to Agnico Eagle in 2014

5x RETURN During Discovery and sale of company



Multidisciplinary Technical Team



MAJOR MINING EXPERIENCE



CHRISTIAN RIOS, P. Geo.

SVP, Exploration

Former Vice President of Exploration at
Bear Creek Mining



ANTONIO ARRIBAS, PhD (Geology)

Director

Former Vice President of Geoscience at
BHP Billiton, Senior Manager Geosciences at Newmont
and Exploration Manager at Placer Dome

PERU TECHNICAL TEAM

HENRY ALIAGA

Senior Geologist/Operations

STEFANO BARBOZA

Curibaya Project Geology Leader

ESTEBAN TAIPE

Senior Geologist

FORMER EMPLOYERS OF THE TECHNICAL TEAM



Silver – The Perfect Commodity

PIVOTAL ROLE IN A SUSTAINABLE & GREEN FUTURE

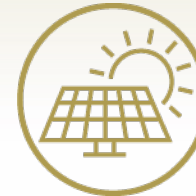
Automotive & EV

From 2021 to 2022, the number of electric cars sold almost doubled, increasing from 3.75 million to 6.75 million globally



Solar Industry

Silver industrial demand rose 11% in 2023 reaching a new record. Silver demand for photovoltaics increased 64%



Bullion

Increasing choice for safe haven investment



Jewelry, Silverware, Photography, etc.

After a record high in 2022, silver jewelry fabrication in 2023 was 203.1Moz (6,318t)



Electronics

Silver's conductivity and corrosion resistance make it necessary for conductors and electrodes



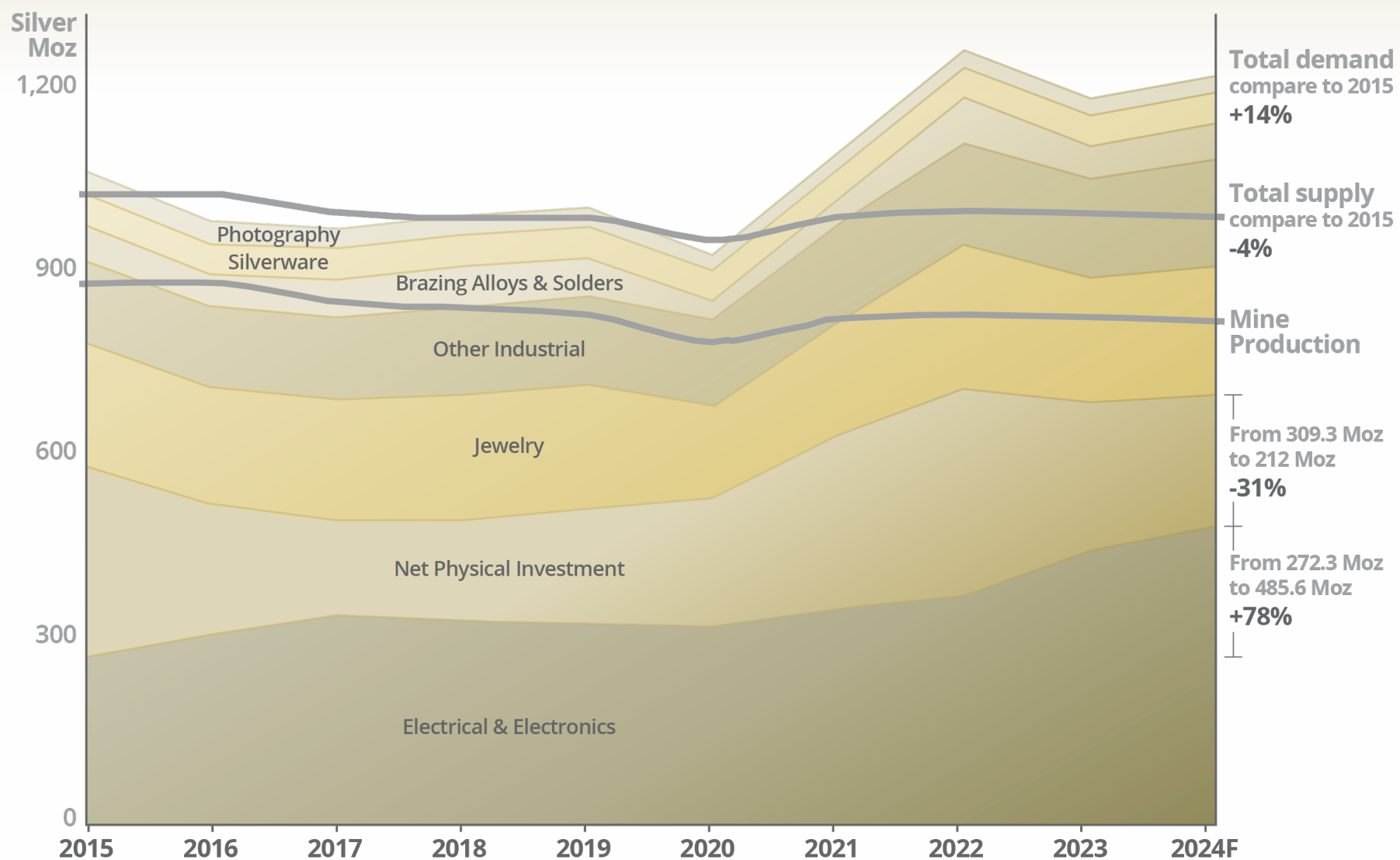
**Global silver demand:
1,195Moz (37,169t) in 2023**

**Peru is top 3 global producer of
silver with ~13% of the global
supply of silver**

*Sources: EV-Volumes; World Silver Survey 2021; Australian Renewable Energy Agency (ARENA); The Silver Institute, <https://www.silverinstitute.org/wp-content/uploads/2024/04/World-Silver-Survey-2024.pdf>

Silver Supply & Demand 2015-2024

SILVER BULLS



Source: <https://www.silverinstitute.org/silver-supply-demand>

Silver Prices Compared to Gold Prices

SILVER BULLS



Source: MacroTrends

Premier Flagship Project in Peru

WORLD CLASS MINING JURISDICTION

WHY PERU?

- ✓ 3rd largest producer of **silver**
- ✓ Largest reserves of **silver** in the world
- ✓ 6th largest producer of **gold**
- ✓ 2nd largest **copper** producer

■ Lima

Pacific Ocean

Peru

■ Cusco

■ Arequipa

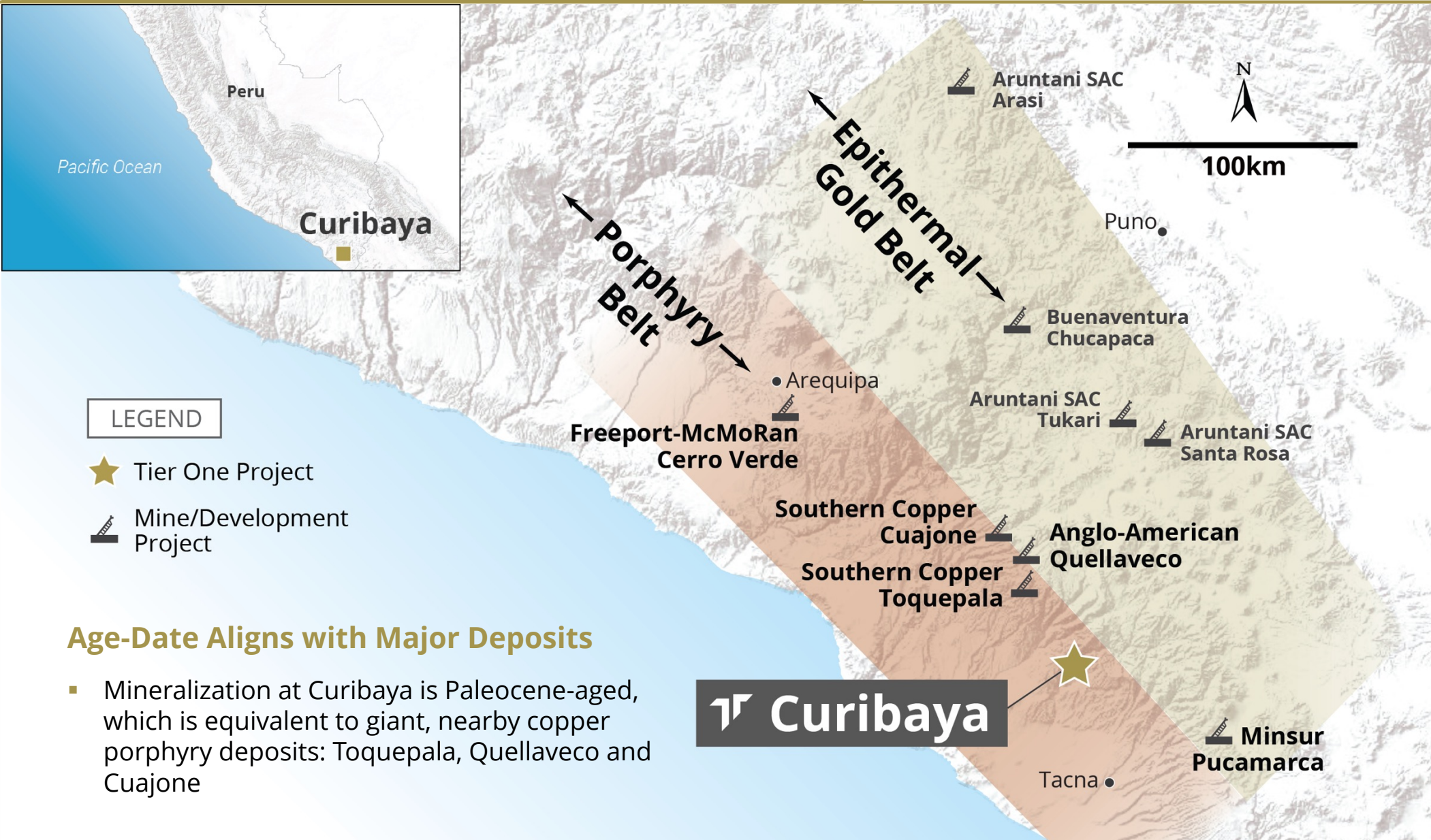
↑ Curibaya

■ Tacna

Curibaya – First Epithermal Intermediate Sulphidation System on a World-Class Porphyry Belt



LARGE-SCALE, HIGH-GRADE, 100% OWNED*



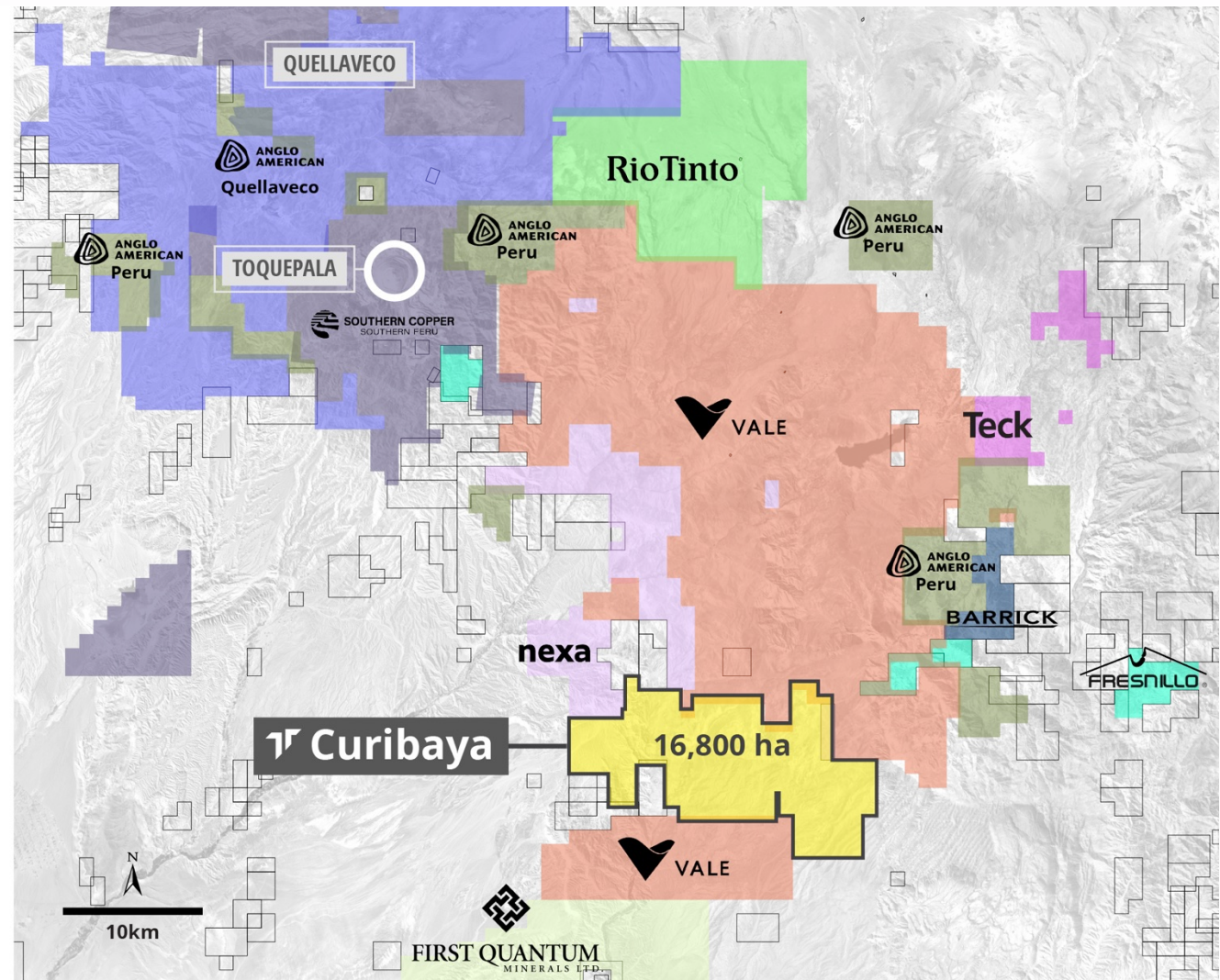
World-Class Mining District

SURROUNDED BY MAJOR MINING COMPANIES

- Curibaya is a large, underexplored land package in a belt of major mines and deposits
- Land immediately surrounding Curibaya has been staked since Tier One initiated exploration

LEGEND

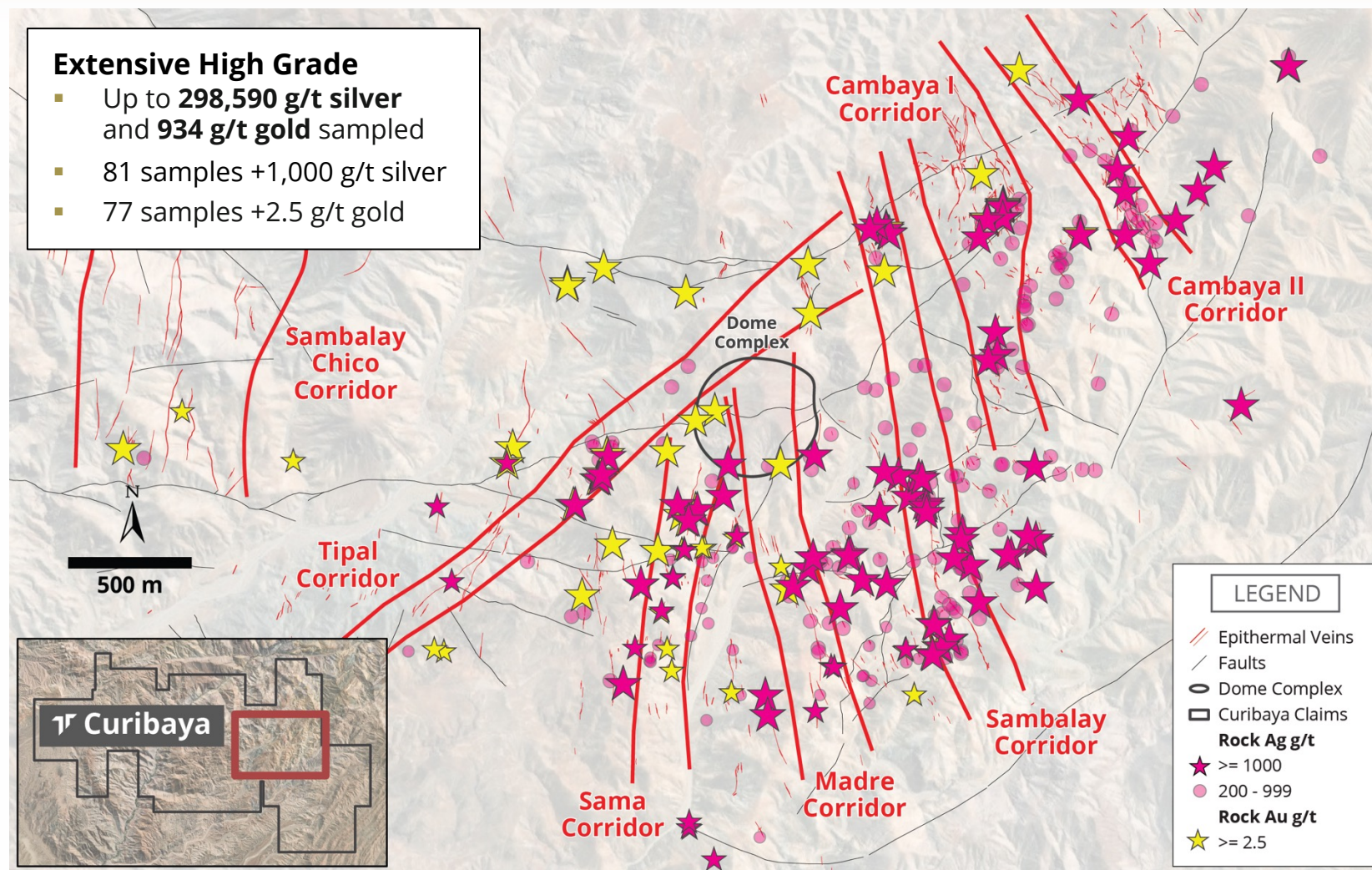
- Curibaya**
Curibaya Project
- Large-Scale Mines
- ANGLO AMERICAN**
Anglo American Peru S.A.
- ANGLO AMERICAN**
Anglo American Quellaveco S.A.
- RioTinto**
Rio Tinto Mining & Exploration S.A.C.
- SOUTHERN COPPER**
Southern Peru Copper Corporation, Sucursal Del Peru
- Teck**
Teck Peru S.A.
- VALE**
Vale Exploration Peru S.A.C.
- BARRICK**
Barrick Gold Corporation
- nexa**
NEXA RESOURCES PERU S.A.A.
- FIRST QUANTUM**
MINERA ANTARES PERU S.A.C.
- FRESNILLO**
FRESNILLO PERU S.A.C.
- Other Claims



Curibaya – The Start of a Potential Silver Discovery

HIGH GRADE ROCK SAMPLES

- Rock sampling programs, demonstrate significant metal content on surface
- Identified high-grade corridors to target



Curibaya – 4 x 5 km Alteration System with Significant Metal Budget



ROCK SAMPLES

- 81 samples over 1,000 g/t silver and 77 samples over 2.5 g/t gold

| SILVER (g/t) | | | | | | | | GOLD (g/t) | | | | | | | |
|--------------|---------|----|-------|----|-------|----|-------|------------|--------|----|------|----|------|----|------|
| 1 | 298,590 | 23 | 2,410 | 45 | 1,575 | 67 | 1,180 | 1 | 934.00 | 23 | 8.19 | 45 | 4.79 | 67 | 2.88 |
| 2 | 10,415 | 24 | 2,330 | 46 | 1,560 | 68 | 1,160 | 2 | 43.20 | 24 | 8.01 | 46 | 4.78 | 68 | 2.86 |
| 3 | 9,910 | 25 | 2,290 | 47 | 1,540 | 69 | 1,140 | 3 | 42.60 | 25 | 7.88 | 47 | 4.78 | 69 | 2.82 |
| 4 | 9,180 | 26 | 2,240 | 48 | 1,520 | 70 | 1,140 | 4 | 42.20 | 26 | 7.62 | 48 | 4.66 | 70 | 2.80 |
| 5 | 8,240 | 27 | 2,220 | 49 | 1,490 | 71 | 1,130 | 5 | 19.20 | 27 | 7.59 | 49 | 4.29 | 71 | 2.76 |
| 6 | 7,990 | 28 | 2,190 | 50 | 1,480 | 72 | 1,125 | 6 | 17.65 | 28 | 7.39 | 50 | 4.11 | 72 | 2.61 |
| 7 | 7,220 | 29 | 2,130 | 51 | 1,480 | 73 | 1,105 | 7 | 17.55 | 29 | 7.29 | 51 | 4.05 | 73 | 2.55 |
| 8 | 6,940 | 30 | 2,130 | 52 | 1,450 | 74 | 1,095 | 8 | 17.50 | 30 | 7.19 | 52 | 4.04 | 74 | 2.54 |
| 9 | 6,810 | 31 | 2,010 | 53 | 1,445 | 75 | 1,070 | 9 | 16.50 | 31 | 7.02 | 53 | 3.97 | 75 | 2.52 |
| 10 | 4,900 | 32 | 1,975 | 54 | 1,430 | 76 | 1,070 | 10 | 15.60 | 32 | 6.97 | 54 | 3.86 | 76 | 2.52 |
| 11 | 4,740 | 33 | 1,880 | 55 | 1,410 | 77 | 1,030 | 11 | 14.55 | 33 | 6.81 | 55 | 3.63 | 77 | 2.50 |
| 12 | 4,620 | 34 | 1,865 | 56 | 1,405 | 78 | 1,020 | 12 | 14.10 | 34 | 6.72 | 56 | 3.52 | | |
| 13 | 4,520 | 35 | 1,855 | 57 | 1,400 | 79 | 1,020 | 13 | 13.40 | 35 | 6.39 | 57 | 3.49 | | |
| 14 | 4,100 | 36 | 1,840 | 58 | 1,360 | 80 | 1,015 | 14 | 12.30 | 36 | 5.82 | 58 | 3.32 | | |
| 15 | 3,950 | 37 | 1,810 | 59 | 1,350 | 81 | 1,010 | 15 | 11.80 | 37 | 5.10 | 59 | 3.31 | | |
| 16 | 3,610 | 38 | 1,740 | 60 | 1,310 | | | 16 | 11.40 | 38 | 5.10 | 60 | 3.30 | | |
| 17 | 3,510 | 39 | 1,680 | 61 | 1,300 | | | 17 | 10.10 | 39 | 4.94 | 61 | 3.30 | | |
| 18 | 3,490 | 40 | 1,635 | 62 | 1,290 | | | 18 | 9.94 | 40 | 4.93 | 62 | 3.20 | | |
| 19 | 3,230 | 41 | 1,630 | 63 | 1,285 | | | 19 | 9.67 | 41 | 4.92 | 63 | 3.19 | | |
| 20 | 3,110 | 42 | 1,600 | 64 | 1,280 | | | 20 | 9.46 | 42 | 4.89 | 64 | 3.11 | | |
| 21 | 2,990 | 43 | 1,600 | 65 | 1,190 | | | 21 | 8.79 | 43 | 4.84 | 65 | 3.08 | | |
| 22 | 2,480 | 44 | 1,585 | 66 | 1,190 | | | 22 | 8.31 | 44 | 4.84 | 66 | 2.91 | | |

Cutoff at
500 g/t Ag

Cutoff at
2 g/t Au

Curibaya – Building Targeting Confidence

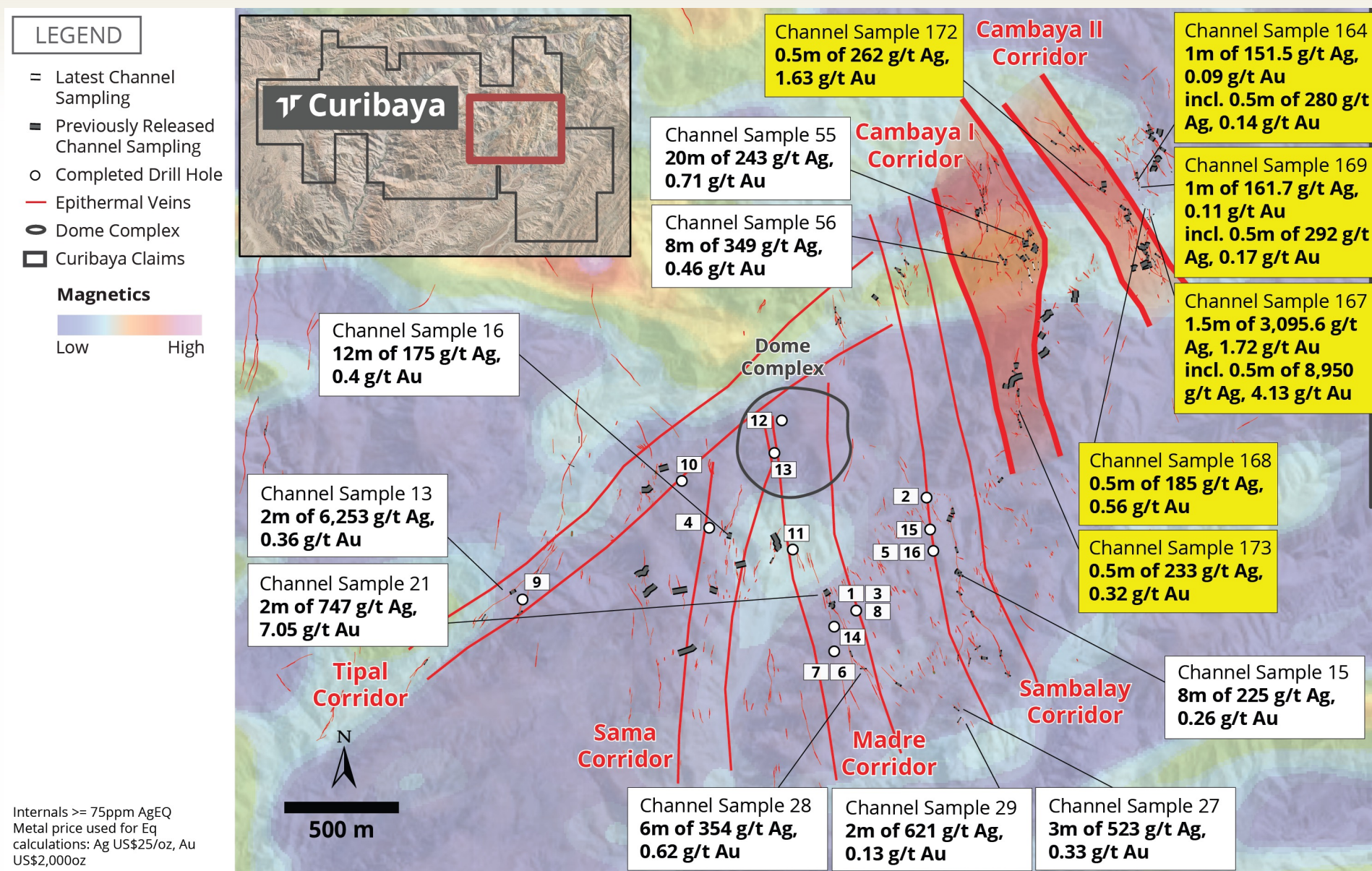
CHANNEL SAMPLING HIGHLIGHTS

- Following rock sampling, the Company conducted a channel sampling program, which demonstrates the grade on surface extends at significant widths
- The best results are primarily in the Cambaya target area

| Channel ID | Corridor | From (m) | To (m) | Length (m) | Ag (g/t) | Au (g/t) |
|--------------------|------------|----------|--------|------------|----------|----------|
| Channel Sample 13 | Tipal | 2 | 4 | 2 | 6,253.2 | 0.36 |
| | | 3 | 4 | 1 | 12,484.0 | 0.62 |
| Channel Sample 55 | Cambaya I | 4 | 24 | 20 | 242.7 | 0.71 |
| Channel Sample 167 | Cambaya II | 0.5 | 2 | 1.5 | 3,095.6 | 1.73 |
| Channel Sample 36 | Cambaya I | 19 | 28 | 9 | 409.0 | 0.41 |
| Channel Sample 52 | Cambaya II | 8 | 10 | 2 | 1,736.5 | 1.61 |
| Channel Sample 56 | Cambaya I | 2 | 10 | 8 | 349.1 | 0.46 |
| Channel Sample 50 | Cambaya II | 6 | 13 | 7 | 368.8 | 0.33 |
| Channel Sample 34 | Sambalay | 26 | 37 | 11 | 232.1 | 1.61 |
| Channel Sample 44 | Cambaya II | 6 | 8 | 2 | 1,074.0 | 0.53 |
| Channel Sample 28 | Madre | 0 | 6 | 6 | 354.2 | 0.62 |
| Channel Sample 16 | Sama | 2 | 14 | 12 | 174.6 | 0.40 |
| Channel Sample 80 | Cambaya I | 2.5 | 7 | 4.5 | 408.2 | 1.48 |
| Channel Sample 15 | Sambalay | 0 | 8 | 8 | 224.6 | 0.26 |
| Channel Sample 27 | Madre | 1 | 4 | 3 | 523.2 | 0.33 |
| Channel Sample 21 | Madre | 9 | 11 | 2 | 747.2 | 7.05 |
| Channel Sample 37 | Cambaya I | 31 | 47 | 16 | 87.1 | 0.12 |
| Channel Sample 45 | Cambaya II | 0 | 13 | 13 | 96.5 | 0.16 |
| Channel Sample 29 | Madre | 2 | 4 | 2 | 621.0 | 0.13 |
| Channel Sample 24 | Sambalay | 1 | 9 | 8 | 149.0 | 0.19 |
| Channel Sample 38 | Cambaya II | 18 | 26 | 8 | 139.6 | 0.46 |
| Channel Sample 32 | Cambaya II | 5 | 30 | 25 | 44.1 | 0.05 |
| Channel Sample 35 | Sambalay | 3 | 20 | 17 | 63.9 | 0.08 |
| Channel Sample 20 | Madre | 0 | 7 | 7 | 152.9 | 0.36 |
| Channel Sample 01 | Madre | 0 | 30 | 30 | 35.6 | 0.09 |
| Channel Sample 04 | Tipal | 18 | 35 | 17 | 59.7 | 0.16 |
| Channel Sample 22 | Madre | 1 | 6 | 5 | 196.6 | 0.91 |

Main Interval - AgEq (Ag,Au) intervals at 25ppm (minimum 5m, max consecutive dilution 6m); Sub-Interval - AgEq (Ag,Au) intervals at 75ppm (minimum 1m, max consecutive dilution 2m)
Metal price used for Eq calculations: Au \$1,300/oz; Ag \$18/oz; excludes some base metal credits

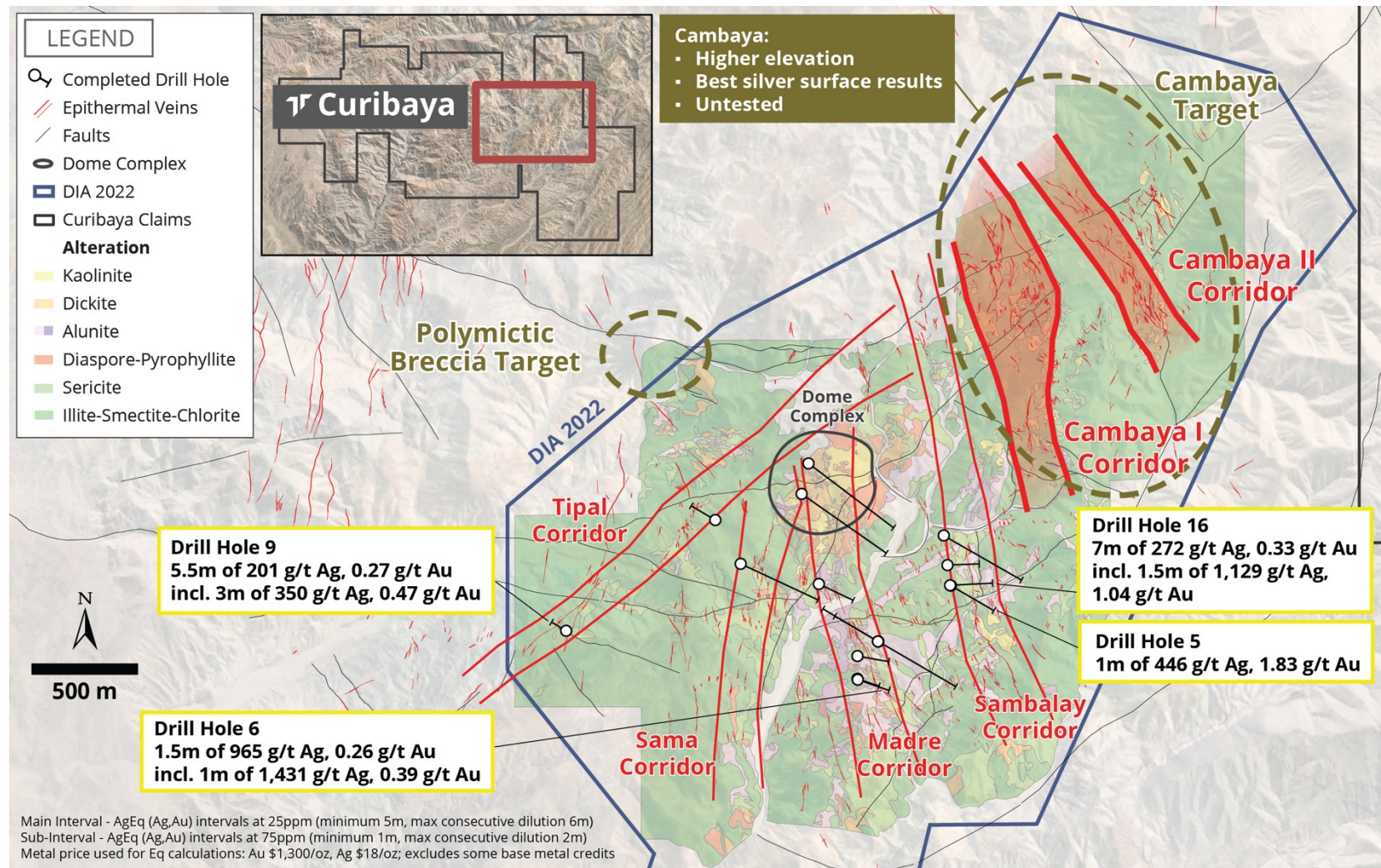
TARGETING STRUCTURAL CORRIDORS



Curibaya – Drilling Highlights

TARGETING STRUCTURAL CORRIDORS

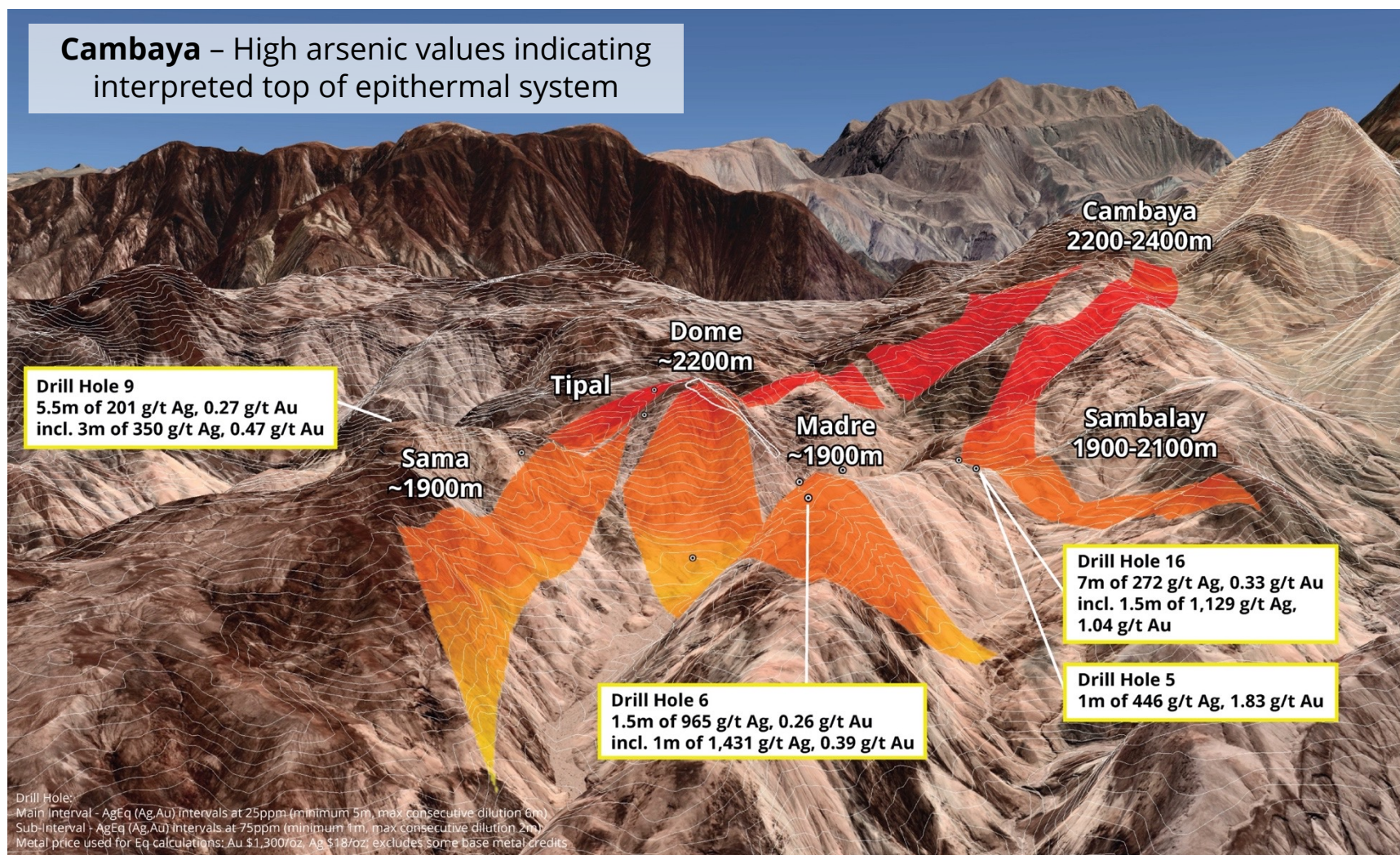
- 30% of the holes in the inaugural drill program at Curibaya hit high-grade intercepts
- New DIA exploration permit includes the Cambaya region in the northern portion of the project, which will be targeted in the second drill program



Curibaya Overview

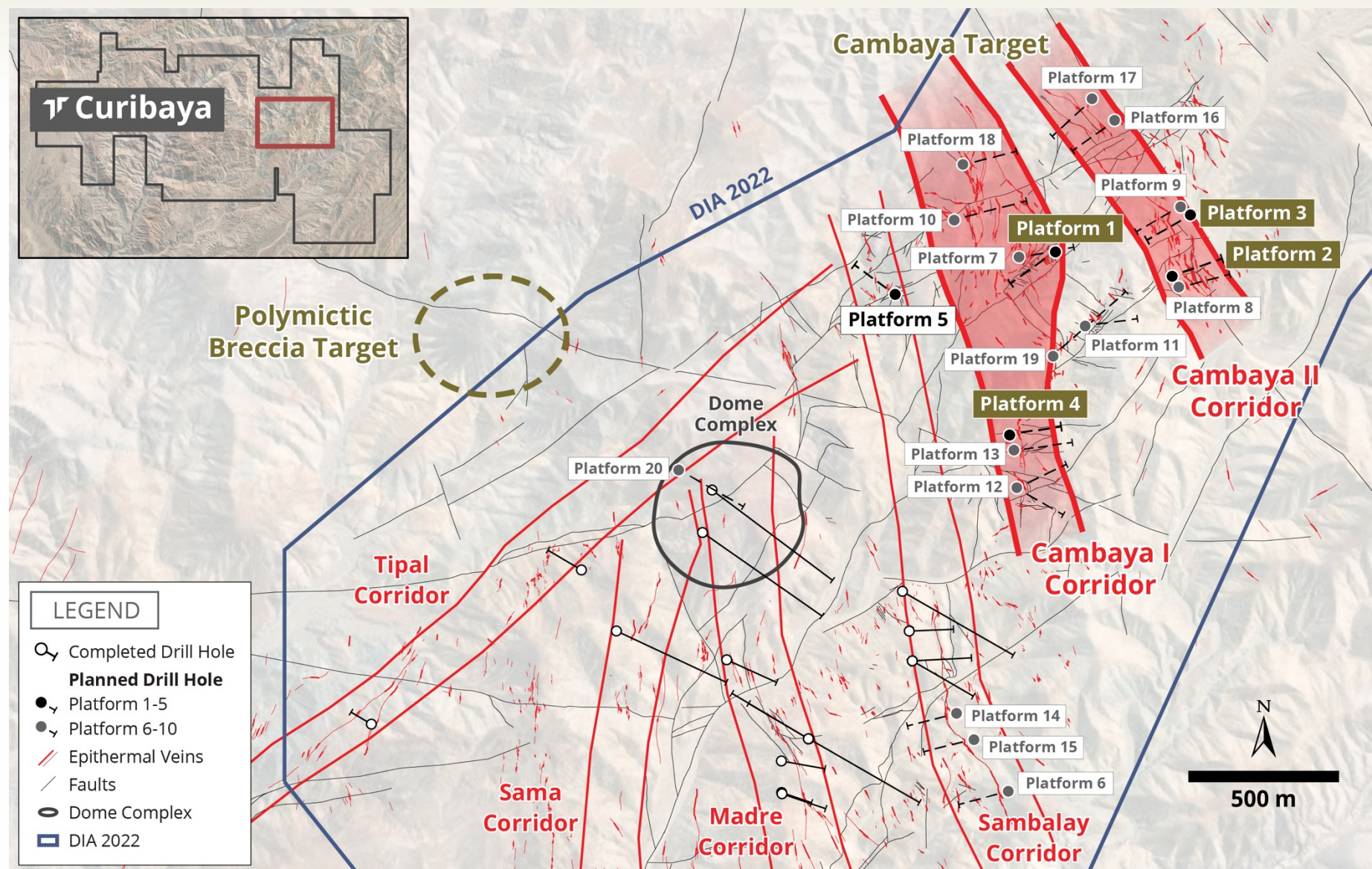
ELEVATION CONTROL ON MINERALIZATION

- The Cambaya region is approximately 300m - 400m higher in elevation than phase 1 drilling
- Less erosion allows for a larger window of preserved epithermal mineralization



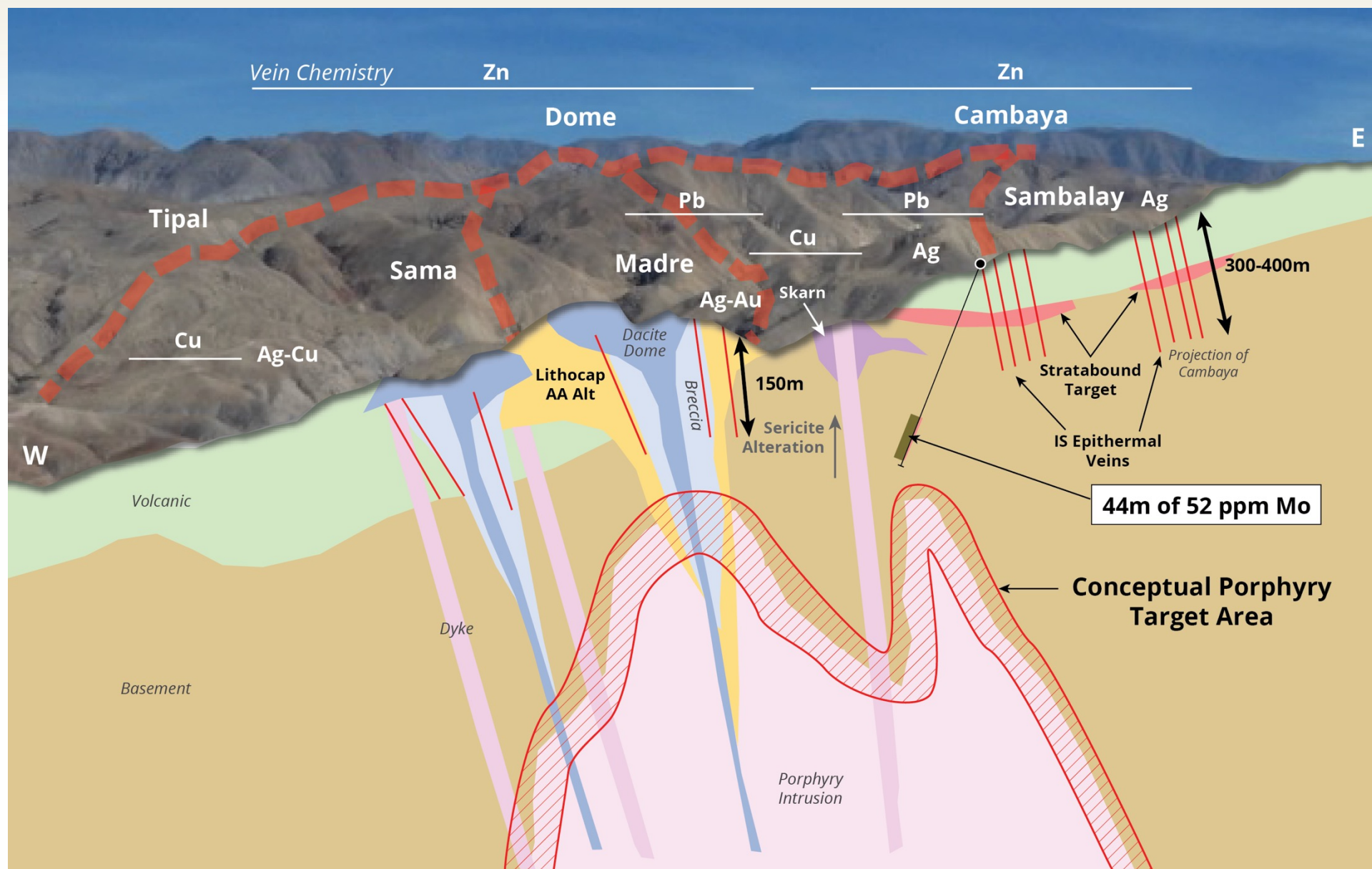
Curibaya – Second Phase of Drilling

PRELIMINARY DRILL HOLES PLAN



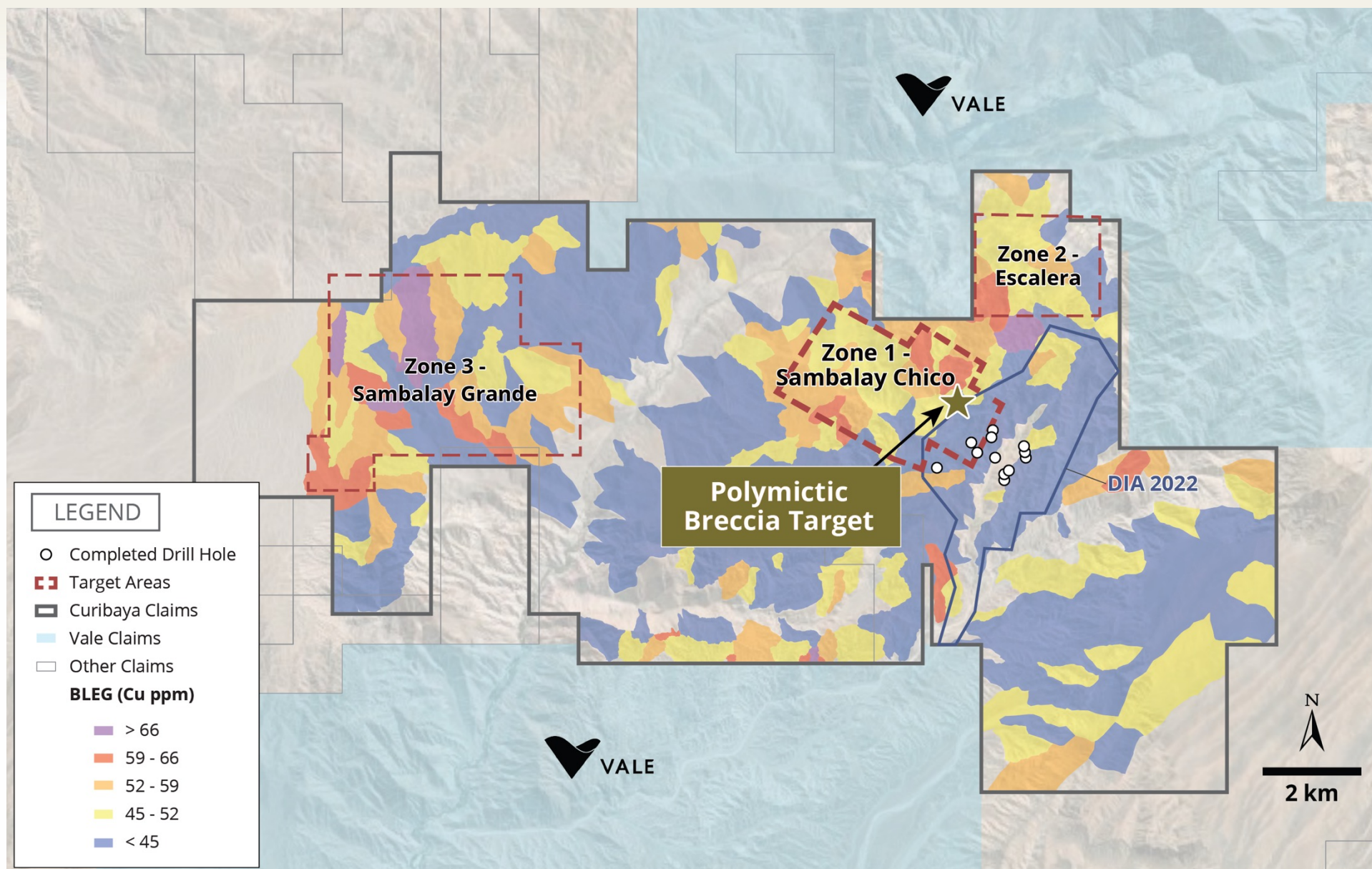
Curibaya – Conceptual Geological Model

TARGETING A POTENTIAL COPPER PORPHYRY SYSTEM



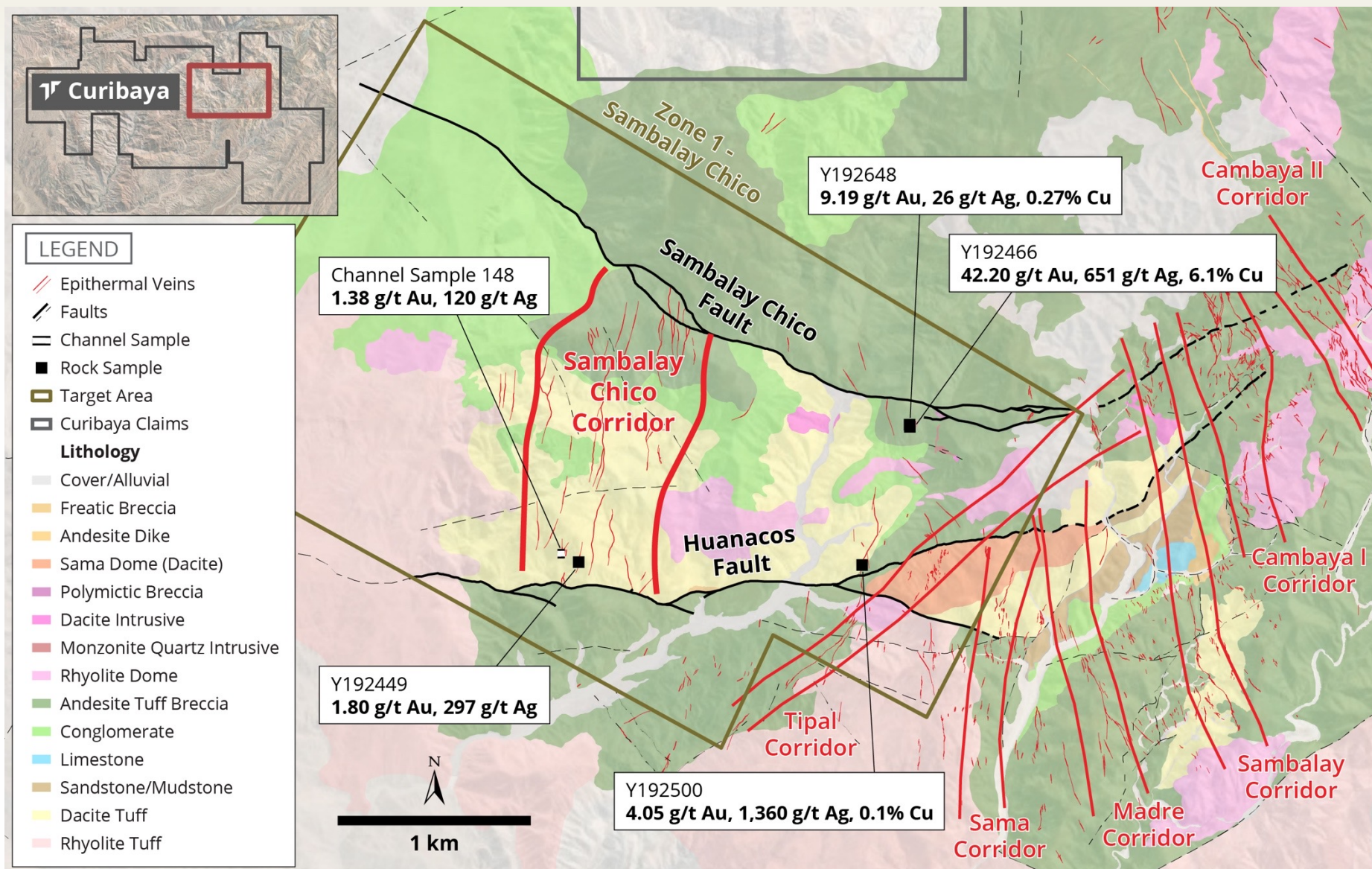
Curibaya – Regional Geological Targeting

COPPER ANOMALIES



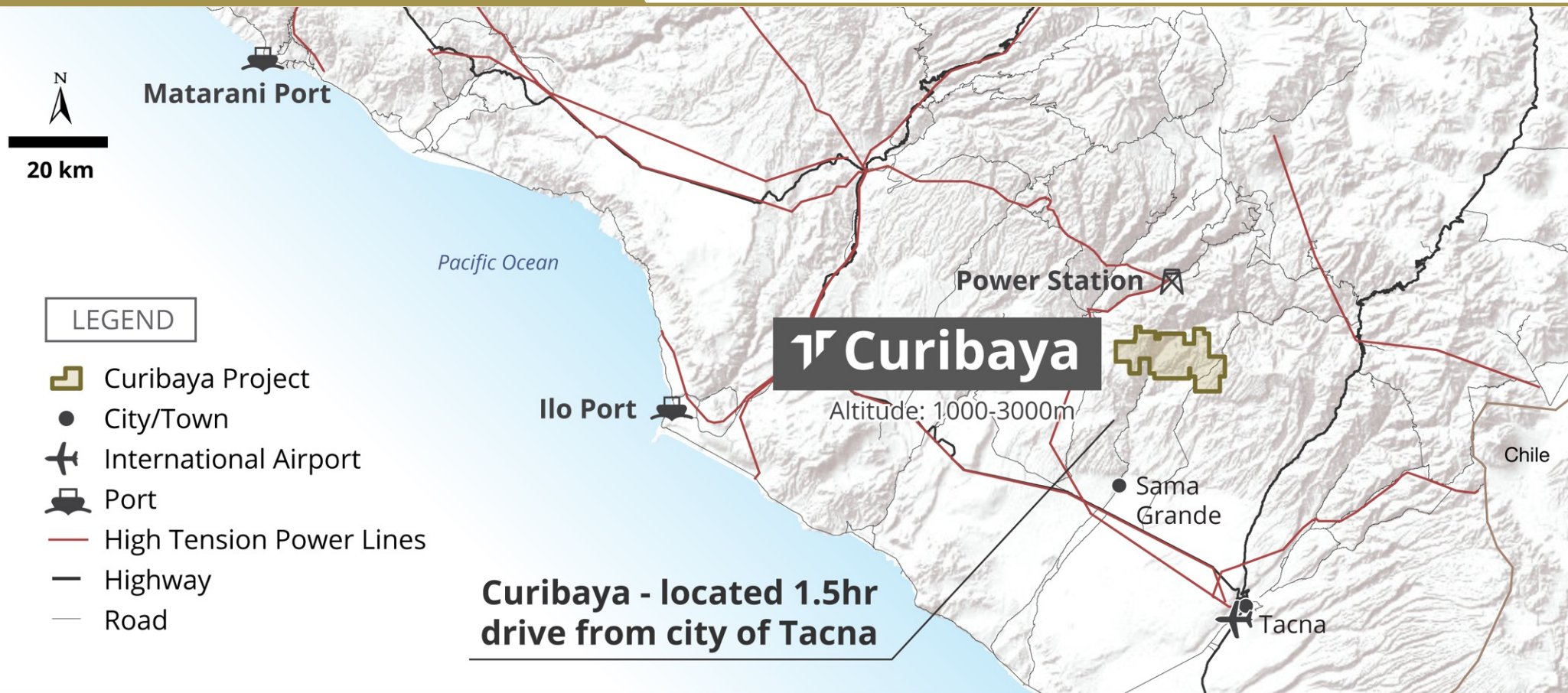
Curibaya – Newly Identified Sambalay Chico Corridor

GEOLOGICAL MAP



Exceptional Access to Infrastructure

POSITIONED FOR SUCCESS



ACCESS ROADS



HIGH TENSION POWER LINES



TOWN OF SAMA GRANDE



PORT



Committed to Sustainable Positive Social Programs in Peru



COMMUNITY SUPPORT

HIGHLIGHTS

- Social agreement signed with the Chipispaya community allowing for all exploration and drilling
- Food, medical and related assistance provided to the community through a variety of programs
- Creating local job opportunities and training



Training new employees at the Curibaya project, 2022



Providing the Chipispaya community near Curibaya with food & medical supplies, 2021



Curibaya – Pursuing World-Class Discovery



PROGRESSIVELY GETTING STRONGER

✓ ADDRESS

- On a world-class porphyry belt with equivalent aged mineralization to nearby major mines

✓ SCALE

- Multiple structures with high-grade results and strike length to be tested

✓ STRENGTH

- Bonanza grades demonstrated on surface and subsurface

Identifying both precious metal and copper porphyry targets



Our Biggest Strength is our Shareholders



CAPITAL STRUCTURE

As of June 1, 2025

| | |
|--|-------------|
| Shares Issued: | 176,232,856 |
| Current Market Cap: | ~C\$18M |
| Options (avg. price \$0.71): | 9,895,000 |
| Warrants Outstanding: (\$0.25 Exp. December 8, 2025, \$0.25 Exp. December 15, 2025 \$0.15 Exp. January 3, 2028) | 15,403,573 |
| Fully Diluted Shares Outstanding: | 201,531,429 |

OPPORTUNITY FOR INVESTORS

- Excellent entry point, significant upside potential
- Substantial value added to portfolio over the last two years
- 52-week high: **\$0.16**
52-week low: **\$0.07**

Shareholder Info:

Total # of Shareholders: ~14,000



Sign up for
the latest news at
www.tieronesilver.com

Contact:
info@tieronesilver.com

778-729-0700

TSXV : TSLV
OTCQB : TSLVF